



# Kiwaniis®

## Monument Hill Club

### 2023 Parade Theme: Honoring the Greatest Generation: Our WWII Veterans

#### **PLEASE READ CAREFULLY -- SOME PARADE PROCEDURES & RULES HAVE CHANGED**

ALMOST EVERY YEAR A CHILD DIES SOMEWHERE IN THE UNITED STATES AFTER BEING RUN OVER BY A FLOAT DURING A 4TH OF JULY PARADE. **THIS HAS NEVER HAPPENED DURING THE MONUMENT PARADE.** LET'S MAKE SURE WE KEEP OUR PERFECT RECORD.

**OUR FIRST GOAL IS A SAFE PARADE. Your signature on the entry form is your legal commitment to follow the rules. PLEASE SET AN EXAMPLE & PROTECT OUR CHILDREN.**

\*\*\*\*\*

The parade is a non-profit activity of the Monument Hill Kiwanis Club, held Tuesday, July 4, 20223

**REGISTRATION** – The registration fee is **\$65**. Veteran's & Military groups, Bands, First Responders, and School groups are exempt from the fee.

There are two options for registration:

- a. **ONLINE:** Go to [www.monumenthillkiwanis.org](http://www.monumenthillkiwanis.org), click on Uncle Sam's hat in the left panel, read the rules and complete the registration form. If you are NOT exempt from the **\$65.00** registration fee, you will be directed to credit card entry upon submission of your application.
- b. **SNAIL MAIL:** Complete, sign, & return the PARADE Entry Registration editable PDF form with a **\$65.00** check or money order, payable to **Monument Hill Kiwanis Club** to:

**Monument Hill Kiwanis Club**

**Attention: Parade Manager**

**PO Box 102**

**Monument, CO 80132**

**NOTE:** Do not include payment for a Street Fair booth. The Street Fair is a separate event, run by the Tri-Lakes Chamber of Commerce--for information, go to [www.trilakeschamber.com](http://www.trilakeschamber.com).

## RESTRICTIONS:

- a. **No vehicles/floats over 35 feet in length are permitted.** They endanger spectators when turning corners.
- b. Parking on Old Denver Highway is not permitted except for floats and motorized entries.
- c. South End parking off Old Denver Hwy at the Monument Ice Rink is for **participant** passenger vehicles and vans only.
- d. South End parking is limited to **2 vehicles per entrant** unless they coordinate ahead of time with the Monument Hill Kiwanis Club parade managers Mark Zeiger, Frank DeLalla, or Joe Foreman at [parade@mhkiwanis.org](mailto:parade@mhkiwanis.org)
- e. Handicapped parking is limited and transportation to lineup positions is by school bus which has no special ADA modifications. The buses also cannot handle pets, bicycles, wagons, large non-foldable strollers, or other like items.
- f. If you have a large number of people riding a float or motorized vehicle it is recommended you load people before the float/vehicle goes to its lineup position. The best location for this is the Santa Fe Trail parking lot on Old Denver Hwy and Baptist Rd.
- g. If you have a large number of pedestrians, you must car/van pool, or park at one of the designated remote parking spots at the two high schools.

## SCHEDULE - The Parade will be conducted on the following schedule:

7:00 AM	All Parade Entrants must enter through the South Baptist Road Entry Point
7:00 AM – 8:00 AM	Parade lineup: No parking on the Old Denver Highway lineup route except for floats and motorized entries.
8:30 AM – 9:30 AM	Judging
9:45 AM	Children's Parade starts
10:00 AM	Parade starts

**JUDGING** - Ribbons will be awarded to Distinguished Entries that best reflect a combination of theme, quality, and spirit. Entries may be judged in one or more of the following categories:

- ★ **Equestrian** - If your entry contains horses, it is judged in the "Equestrian" category.
- ★ **Float** - A "float" is more than a simple towed flatbed or motorized vehicle. **Decorated vehicles are not floats.**  
Floats must exhibit creativity and effort. Floats may be self-propelled, pushed (with suitable drivervisibility), or towed. Such entries will be judged in the "Float" category.
- ★ **Military** - Entries with military themes or military members (active, reserve, guard, retired, or otherwise having served in any of the six branches of the United States Armed Services) will be judged in the "Military" category.
- ★ **Motorized** - If your entry contains a vehicle of any sort, other than a float, it will be judged in the "Motorized" category.
- ★ **Pedestrian** - if your entry has no motorized vehicles (cars, ATVs, motorbikes, etc.) with or without animals, the entry will be judged in the "Pedestrian" category.

## **CHILDREN'S PARADE - Items a. - f. below apply to the Children's Parade ONLY**

- a. For the Children's Parade only, there is no entry fee/registration. All children are welcomed, and parents may accompany their children.
- b. Parents are encouraged to have their children in the parking lot at St Peter Catholic Church, Jefferson St., Monument by 8:00 AM but no later than 8:30 AM. **Parking is not available in this parking lot nor in the Grace Best School parking lot.**
- c. Parents may pull or push children in suitable wheeled transport. Children may ride bicycles but must be able to stay at parade pace, stopping as necessary to maintain that pace.
- d. **No motorized vehicles, bikes, or scooters are allowed.**
- e. Unaccompanied children must abide by the direction of the Children's Parade Director through the completion of the parade route.
- f. **It is often hot at parade time so water and snacks are a must for children** participating in the parade. Check the weather & make sure your children are suitably attired.

## **PARADE RULES & REGULATIONS - YOUR SIGNATURE IS YOUR LEGAL COMMITMENT**

To ensure a safe, fun event for everyone, **your adherence to the following rules is mandatory:**

- a. Entries must have liability insurance and provide proof, on request. It is not necessary to send a copy of your insurance with your registration.
- b. Drivers of entries must hold a valid driver's license and be insured. Random checks may be made by the Parade Marshals along the route.
- c. Units from political organizations may be entered in the parade. Campaigning on issues **MAY NOT** be conducted during the parade. Political entries will not be judged.
- d. To be judged, entries must be in line in their designated sequence no later than 8:30 am.
- e. **Follow the directions of the Line-up Marshals.** Do not expect to go to the start line and wait your turn. Line-up Marshals will ask you to stop in a position on Old Denver Road, according to your number. If you arrive early, please do not pass the South Entry Point until directed to do so.
- f. No semi-trucks with trailers are allowed.
- g. Entries must be able to turn 90° corners on narrow streets without running over spectators.
- h. **NOTHING MAY BE THROWN FROM ENTRIES SO THAT IT LANDS IN THE STREET (this includes candy, toys, flyers & water bottles). Water balloons or water dispensing equipment are expressly prohibited.** Members of your group may walk beside your entry throughout the parade route and hand out candy or other items OFF the street. **Think safety.**
- i. Each equestrian entry with animals **must** provide immediate cleanup after their entry during the entire parade route including staging. Units in sequence may combine this service but must indicate their agreement clearly on the entry form.
- j. Entries should demonstrate a connection to the theme **"Honoring the Greatest Generation: Our WWII Veterans."**
- k. Clearly identify your organization and display your entry # on ALL elements of your entry (e.g., car/collectors clubs with several vehicles must display their entry number on every vehicle). A few days before the parade you will be sent an email informing you of your lineup positions.
- l. Keep the parade moving; maintain no more than 35 feet between the entry in front of you. More space tempts spectators to cross the parade route, which is extremely dangerous. **Obey the parade marshals.**
- m. **In particular please obey the parade marshals and police units at the end of the parade route (Beacon Lite Road and Second Street) to avoid congestion when participants are off-loading floats and other parade items.**
- n. Parade units violating any of the rules contained herein may, at the discretion of the Parade managers, be removed from the Parade, disqualified for Awards, and denied entry into future parades.

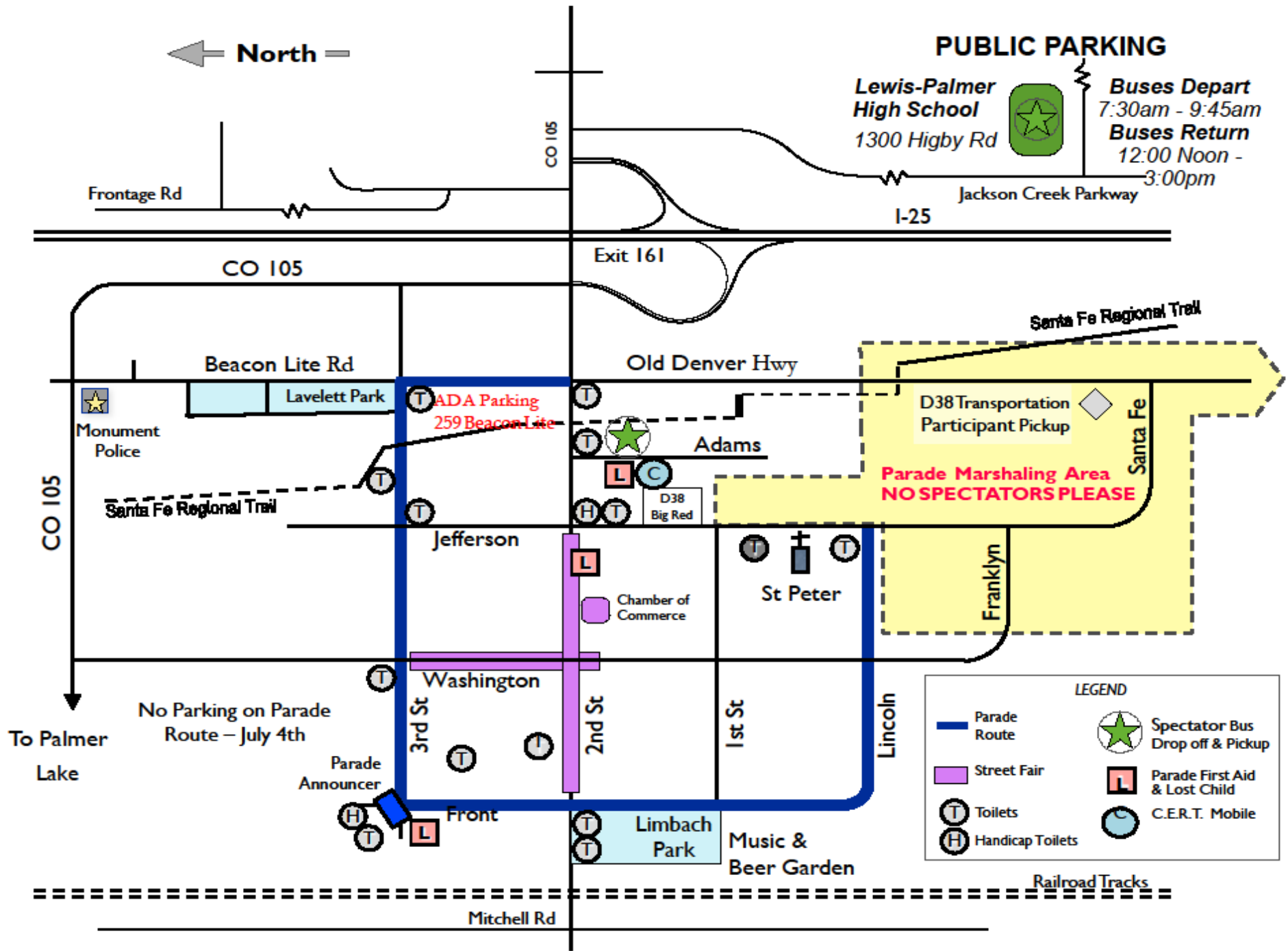
Questions? Email or call the parade manager:

Mark Zeiger            719-494-7718

Email: [parade@mhkiwanis.org](mailto:parade@mhkiwanis.org)

**Registration ends on June 27, 2023**

To go to the online registration page or to download the mailable PDF registration form, click [HERE](#)



**PUBLIC PARKING**

Lewis-Palmer High School  
1300 Higby Rd



**Buses Depart**  
7:30am - 9:45am  
**Buses Return**  
12:00 Noon - 3:00pm

I-25

CO 105

Exit 161

Beacon Lite Rd

Old Denver Hwy

Santa Fe Regional Trail

Monument Police

ADA Parking  
259 Beacon Lite

D38 Transportation  
Participant Pickup

Adams

**Parade Marshaling Area  
NO SPECTATORS PLEASE**

Santa Fe

Santa Fe Regional Trail

Jefferson

D38 Big Red

St Peter

Chamber of Commerce

Franklyn

No Parking on Parade Route - July 4th

Washington

Lincoln

To Palmer Lake

Parade Announcer

3rd St

2nd St

1st St

Front

Limbach Park

Music & Beer Garden

Railroad Tracks

Mitchell Rd

**LEGEND**

- Parade Route
- Street Fair
- Toilets
- Handicap Toilets
- Spectator Bus Drop off & Pickup
- Parade First Aid & Lost Child
- C.E.R.T. Mobile